

Chaire Logistics City



News from the Chair

This spring of 2026, the Chair is pleased to share its latest news with you:

- Research activities
- Conference participation
- Field trips and visits
- Upcoming events
- Recent publications and presentations
- The Chair's team

About

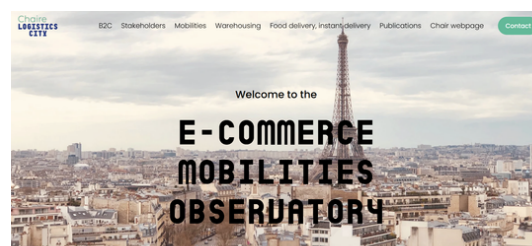
The Logistics City Chair, established in 2019 and renewed in 2023 for a five-year term, is dedicated to research on:

- urban logistics, and urban and suburban logistics real estate (theme 1),
- consumer trends and new practices and their impact on cities and their environment (theme 2),
- and public policies for sustainable urban logistics (theme 3).

The chair is funded by its founding partner Sogaris, the Île-de-France Region, the Greater Paris Metropolitan Government, and the Gustave Eiffel University Foundation.

For more information and news, visit our :

- Official website : [Chaire Logistics City](#)
- Observatory : [E-commerce mobilities observatory](#)
- Page : [LinkedIn](#)



• The Chair's Research

Seminar Public policy and urban logistics

On **December 4, 2025**, the **Logistics City Chair** organized a scientific seminar at the Maison des Ponts (Paris) focused on the governance and public policies of urban logistics. The event brought together nearly 75 researchers and professionals (50 in person and 25 via videoconference) for the presentation of the book *Urban Logistics and Public Action*, an introduction by **Jonathan Sebbane** (Sogaris), a roundtable discussion moderated by **Pierre-Henri Besnard** (Juliette Berthon, Sogaris), **Adeline Heitz**, CNAM, **Joy Pasquet**, TIF, **Antoine Robichet**, DGITM, **Martine Vazquez**, MGP, **Nathalie Woock**, Île-de-France Region), as well as two presentations of recent research by **Abel Kebede Reda** and **Nora Marei** (Prodig, Paris 1 Panthéon-Sorbonne). View the presentation materials [here](#).



Seminar at the Maison des Ponts in Paris, December 4, 2025, photo by Alexandre Fontana

Public Policy and Urban Logistics: Release of Welcome to Logistics City No. 4

Booklet No. 4 from the Chair (available [here](#)), co-authored by **François Adoue**, **Laetitia Dablanc**, and **Juliette Berthon**, addresses various topics related to **urban logistics policies**: “curb management,” new data sources, access regulations, and low- or zero-emission zones, net zero land-use change, and policies regarding digital delivery apps and e-commerce.

The booklet comprises five chapters:

- Governing urban logistics: new challenges, definitions, and concepts
- Banning polluting vehicles in cities: the rise of Low-Emission Zones (LEZs) in urban logistics regulation
- Logistics urban planning in cities
- “Curb management” and logistics
- Better data to govern urban logistics

To view this issue and the three previous issues of *Welcome to Logistics City*, visit our website (available [here](#)).

Sixth Survey of Platform Delivery Workers in Paris

In **October 2025**, following in the footsteps of previous surveys conducted since 2016, a **survey was conducted in Paris and simultaneously—for the first time—in Lyon/Villeurbanne on the characteristics, working conditions, and accidents involving UberEats and Deliveroo delivery workers**. Among delivery drivers, 15% had at least one accident resulting in injury, and 45% of those involved in accidents had two or more accidents, often involving other road users. Speed is cited as the main cause, and many delivery riders were riding without helmets. Generally speaking, the two cities have quite different profiles (for example, fewer riders with higher education in Lyon, and significantly more electric vehicle users in Paris—it is also noted that very fast electric bicycles have replaced mopeds). In both cities, workdays are long (>8 hours), and workweeks often last six or even seven days. This survey is part of the ERROLI project (UMRESTTE/UGE) supported by the French Road Safety Delegation and the City of Paris. Available [here](#). **A seventh survey focused on physical and mental health is scheduled for October 2026.**

It is also worth noting the recent publication of a very interesting study by INED (et al.), conducted in Paris and Bordeaux using a methodology similar to ours, which is available [here](#). This area of research is finally beginning to yield significant quantitative results!

A co-design workshop is in the works

As part of the European research project FRESH (Freight, Shopping, and Logistics in the City), a stakeholder survey was conducted between January and March 2026 to explore the extent to which e-commerce last-mile logistics as well as the public policies governing it, align with the concept of the “15-minute city.” We would like to thank all the companies and practitioners who took the time to participate. The next major step is a co-design workshop, currently in preparation, which is scheduled to take place before the summer of 2026.

Thank you to Marion Albertelli and the students

The Chair extends its thanks and congratulations to **Marion Albertelli**, a postdoctoral researcher from 2023 to fall 2025, who is now a junior research fellow at Gustave Eiffel University/SPLOTT research unit (Systems, Logistics, Transport Organization, and Work). Congratulations also to the research interns **Masaya Ikeda** (June–August 2025) and **Thomas Leloup** (March–September 2025, see page 7). Thank you for the quality of their work and their contribution to research activities, as well as to **Édouard Delbec** (February–March 2026), who explored the research environment and collaborated with Pierre-Henri Besnard.

FRESH Project: Solutions for e-commerce logistics

For the FRESH project (The FREight-SHopping nexus in urban outskirts and beyond), a report was published in November 2025 by **Abel Kebede Reda** and **Laetitia Dablanc** examines the impacts of e-commerce growth on last-mile logistics and the challenges it poses for cities in terms of sustainability and efficiency. It outlines a typology of key solutions, such as clean delivery methods, micro-hubs, regulatory tools, and new logistics models. The analysis shows that these solutions can reduce emissions and improve performance, but require appropriate infrastructure, investment, and coordination among stakeholders, which can sometimes be complicated. The success of these measures depends on the urban context and governance frameworks. Read the report [here](#).

A dataset to better visualize warehouses in the Paris region

The Chair continues its work on the production of spatial data related to logistics facilities with the release of a preliminary version (**Mohammed Younes**) of a dataset on warehouses in the Île-de-France region. This work builds on previous research into warehouse mapping and the methodological challenges associated with identifying, classifying, and locating warehouses using heterogeneous sources. Available [here](#).



Map representation of the warehouse network in the Paris region, Mohammed Younes

Academic visit in Chicago

From July to September 2025, **Reece Fisher** conducted a research visit for her PhD work at the Urban Transportation Center at the University of Illinois at Chicago (many thanks to Kazuya Kawamura, Carla Tejada, and the entire team). This research stay was part of her dissertation, which focuses on the role of various stakeholders in the development of warehouses and on the perspectives of these stakeholders in various planning contexts.



Chicago's first multi-story logistics warehouse, September 2025, photo by Reece Fisher

E-commerce facilities' acceptance: New postdoc

Philippe Bairras began a postdoctoral research in March 2026. Together with a research assistant (currently being recruited), he is working on the political and social acceptability of Amazon's facilities in France, Spain, and Portugal. The goal is to understand how Amazon warehouses integrate (or fail to integrate) into local communities, and how residents and elected officials react. This study will provide a better understanding of the current reconfiguration of economic spaces, within a context of land-use conflicts and the gradual implementation of the (French) net zero land take objective by 2050.

New research internships

Welcome to **Mathis Leroy**, an urban engineering student (Technical University of Compiègne), who will be working on the socio-spatial analysis of factors influencing the location of warehouses, **Amel Rahim**, a data science student from the National Polytechnic School of Algiers, will work on the automated detection of warehouses using aerial imagery and geographic data with Mohammed Younes (LVMT) and Adrien Béziat (SPLOTT), and **Camille Roches Demars**, who will work on parcel crowdshipping. This last research internship was organized in partnership with the National union of van freight transport (SNTL) and the Professional Federation of Cycle Logistics.

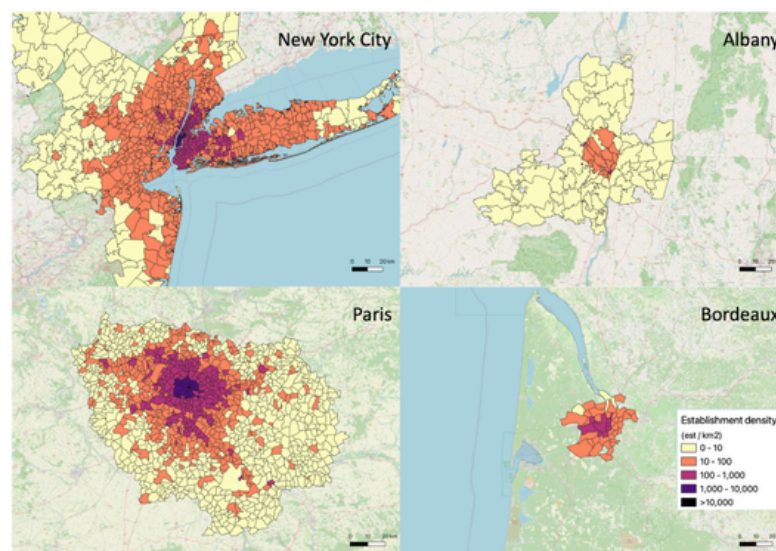
- **A closer look at two published articles**

How should space be allocated in mixed-use development projects in the Paris region ?

The case study “Toward an urban logistics design: programming logistics in mixed-use urban projects in Île-de-France,” conducted by **Reece Fisher** and **Adeline Heitz** and published in the journal **European Planning Studies** (2025), presents a method for estimating the space required for logistics activities in planned mixed-use urban projects in the Paris region. This is part of a broader research question: how should logistics space be planned and designed from the outset of an urban project? While the role of logistics in cities is currently being questioned, standardizing these facilities in terms of size, location, and form has proven difficult. Integrating logistics spaces into urban projects can enable developers to achieve their goals of promoting logistics real estate while meeting the expectations of public stakeholders, whose objectives are linked to reducing externalities and better integrating the logistics system. The method presented in this case study combines three categories of data to establish initial guidelines regarding the space to be allocated to logistics in three mixed-use urban projects. Drawing on existing operational urban planning tools and data from a semi-private logistics real estate developer, the method comprises three steps to determine the initial dimensions of a hypothetical logistics infrastructure within an urban project. Available [here](#).

International comparison of freight trip generation in urban areas

Published in *Transportation Research Part A: Policy and Practice*, the article “Freight trip generation in metropolitan areas: an international perspective,” co-authored by **Abel Kebede Reda** and an international team of researchers, delivers the first international comparison of freight trip generation across 24 metropolitan areas spanning four continents. The study makes an important contribution to urban freight research by showing how freight demand varies across metropolitan contexts and by clarifying how freight trip generation models can be interpreted, adapted, and compared across cities. Using establishment-based data from a diverse set of metropolitan areas in both the Global North and the Global South, the paper reveals clear differences in freight trip generation patterns across cities and regions. These variations reflect differences in urban form, economic composition, and the spatial organization of activities, in addition to the higher concentration of freight generation activity in urban cores than in other urban areas. The paper also proposes a conceptual framework and highlights the need for more harmonized, up-to-date data to support future research and planning in metropolitan urban freight systems worldwide. Access the article [here](#).



Density of establishments in New York City, Albany, Paris, and Bordeaux
(J. Amaral and al. 2026)

• Attendance at conferences and site visits

Seminars and technical visits in Tokyo

Two seminars, accompanied by technical tours, were organized in Tokyo in **December 2025**, at the invitation of our colleague **Takanori Sakai** from the Tokyo University of Marine Science and Technology. This visit also included participation in the TransportHub Seminar of the Department of Civil Engineering at the University of Tokyo. The presentations are available here: [\(1\)](#), and [\(2\)](#).

This trip notably included a visit to the Chronogate building owned by Yamato, a building intentionally integrated into the life of the neighborhood (Haneda district) featuring an educational tour for visitors and school groups, a shop, a sports hall, and local businesses.



Visit to the Chronogate Yamato in Tokyo, December 16, 2025



Secure visitor route through the warehouse Yamato Chronogate in Tokyo, photo by Laetitia Dablanç

POLIS Annual Conference in Utrecht, the Netherlands

Mohammed Younes attended the annual POLIS conference in Utrecht, the Netherlands, in **November 2025**, as well as the general assembly of this network of European cities. He also took part in the activities of POLIS's Urban Freight Working Group, including a field visit to see the solutions implemented by the city of Utrecht in the area of sustainable urban logistics, particularly regarding river transport, light electric vehicles, smart delivery zones, and zero-emission construction sites.



Urban Freight Working Group, Utrecht, Netherlands, November 2025



Innovations in Utrecht for urban logistics, November 2025, photos by Mohammed Younes



First report from the Logistical and Productive Seine River research centre

Led by **Adeline Heitz** (CNAM) and supported by the Logistics City Chair, this center has just published a very interesting report titled "Managing the Shortage of Logistics Land on the Seine Corridor". More [info](#).

Ana Bricia Galindo Muro presented her research at the LVMT

Ana Bricia Galindo Muro, from Tecnológico de Monterrey in Mexico, visited the LVMT on January 29, 2026, to present the findings of her doctoral thesis on **platform delivery workers** in Mexico City. Her thesis is available [here](#).



Presentation by Ana Bricia Galindo Muro
at the LVMT, January 29, 2026

Upcoming event: WCTR, World Conference on Transport Research, Toulouse

June 6–July 10, 2026

Several members of the Chair will participate in the World Conference on Transport Research (WCTR), the leading international scientific conference in the field of transportation:

- **Philippe Bairras** will present the findings of his dissertation in a presentation titled: “The territoriality of the Atlantic corridor between politicization, demands, and media coverage”.
- **Laetitia Dablanc** will deliver the keynote lecture for the conference’s freight track, on the topic “The multiple challenges of logistics in cities: international overview and examples from France”.
- **Reece Fisher** will present a paper titled: “Toward a social acceptability of logistics facilities: Assessing local opposition to logistics development projects in France through media content analysis”.
- **Abel Kebede Reda** and **Laetitia Dablanc** will participate in the following presentations:
 - Heleen Buldeo Rai, Kathleen Cauwelier, Adrien Beziat, Laetitia Dablanc: “Out-of-home deliveries, how to make them more sustainable? Segmentation of consumers’ online shopping and delivery choice behaviors, the case of France.”
 - Abel Kebede Reda, Heleen Buldeo Rai, Laetitia Dablanc: “Integrating Urban Logistics in the 15-minute City: A Conceptual Framework.”
 - Eduard J. Alvarez-Palau, Carles Mendez-Ortega, Ali Maddahi, Cristian Castillo, Laetitia Dablanc: “A preliminary assessment of logistics sprawl in the metropolitan areas of Spain.”
- **Mohammed Younes** will present a poster titled: “The geography of e-commerce warehousing in France: an exploratory analysis of locational determinants,” co-authored by Marion Albertelli, Matthieu Schorung, and Laetitia Dablanc.
- **The Fresh project (Laetitia Dablanc, Eva Heinen, Abel Kebede Reda** and other colleagues) is applying for a Special Session in collaboration with Special Interest Group B4 Urban Goods Movement (**Michael Browne**) and the POTUS project (**Jonathan Fetka**) and **Maja Kiba-Janiak**.

Conference on Logistics at Sorbonne Abu Dhabi

Laetitia Dablanc was invited in **November 2025** to present the research of the Logistics City Chair at a conference on interconnectivity and transportation at Sorbonne Abu Dhabi, at the invitation of our colleague, geographer **Benjamin Motte-Baumvol**, which will also give her the opportunity to contribute to a study on platform delivery workers in Abu Dhabi led by Benjamin, which began in early 2026. The two presentations given by L. Dablanc are available here: [\(1\)](#) and [\(2\)](#).



Abu Dhabi, November 2025, photo by Laetitia Dablanc

The research work of the Logistics City Chair was also presented at the **Erasmus School of Economics** in Rotterdam on November 27, 2025, and at **IESE Barcelona** on September 17, 2025 (Territori en Moviment Seminar, Session 4 : The Future of Logistics).

Young Researchers' Day of the POPSU

On **January 7, 2026**, **Reece Fisher** participated in the POPSU (a French research and collaboration program on urban planning) Young Researchers' Day. She participated in a panel discussion on the topic "Writing in English and Internationalizing Your Research Career" with Renaud le Goix and Pedro Serrano Gomes, sharing her experience as a doctoral student studying both American and French contexts of planning and development for urban logistics.



Reece Fisher at the POPSU Young Researchers' Day, January 7, 2026, photo by Léonard

Afilog week in Lyon

From **February 24 to 26, 2026**, **Laetitia Dablanc** took part in an event organized by Afilog, the association of logistics and industrial real estate professionals, in Lyon, France. The event featured site visits and discussions on the role of logistics real estate in urban areas. Afilog's new white paper, Industrial and Logistics Real Estate in Urban Areas, was presented.



Urban logistics hotel in Lyon, February 24 2026, photo by Laetitia Dablanc

FAO Explores Sustainable Urban Logistics in Paris

On **March 4, 2026**, Sogaris hosted a delegation from the Food and Agriculture Organization of the United Nations (FAO), in the presence of **Philippe Bairras**, for a tour of the Chapelle International logistics hotel (41,500 m²). This visit is part of the FAO's work on supply chain sustainability, utilizing innovative tools (particularly geospatial ones) and open digital infrastructure to better manage logistics flows. At Porte de la Chapelle, these initiatives are taking concrete shape with the integration of new features such as rooftop urban agriculture. The visit continued at the Greater Paris Metropolitan Government's headquarters with a presentation by **Laetitia Dablanc**.

Land and logistics real estate in the regional master plans in France

Thomas Leloup, a master's student at the ENS de Lyon, completed his research internship in September 2025 with the Logistics City Chair in partnership with Afilog (**Diana Diziain**) and France Logistique (**Maxime Forest**). His work focused on land use and logistics real estate, as well as the net zero land take objective in regional master plans, highlighting the wide variability in how logistics is taken into account in regional planning. His master's thesis is available in full [here](#).

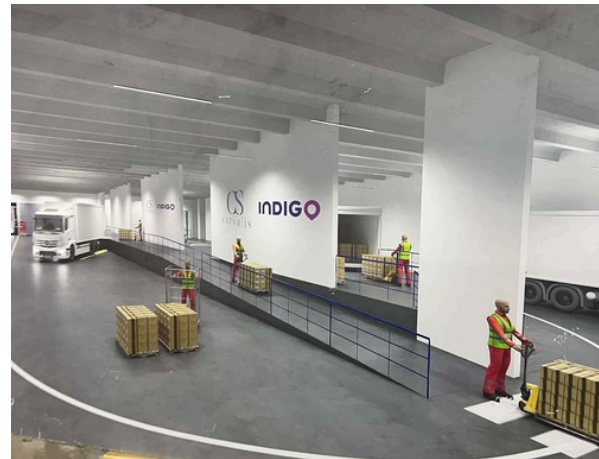


Compilation of regional maps of logistics planning in French regional master plans, September 2025, map by Thomas Leloup

Tour of a logistics facility project beneath Foch Avenue

On **March 17, 2026**, **Philippe Bairras**, **Mathis Leroy**, and **Laetitia Dablanc** visited the construction site of the Arsenal Foch, a 12,000-square-meter multi-purpose logistics project developed by Indigo and Corsalis in collaboration with the Paris EIVP School of Engineering (Chair of Circular Urban Infrastructure).

The facility, scheduled for completion in late 2026, will house receiving, storage, and shipping operations and combines various uses of the underground, including parking, cycle logistics, and multifunctional spaces. The site vertically organizes internal flows (goods lifts) and specific technical equipment to address constraints related to the urban environment.



Future logistics hub at the Arsenal Foch in Paris, March 17, 2026, photos by Laetitia Dablanc and Indigo

Online Roundtable: “Convincing politicians”

On March 18, 2026, **Philippe Bairras** and **Mathis Leroy** attended the online conference “Convincing Elected Officials: The First Step Toward a Successful Logistics Implementation.” The speakers emphasized the importance of looking at impacts, constraints, and benefits to evaluate a project’s value to a local community. This perspective aligns with the postdoctoral research of **Philippe Bairras**, which analyzes the political and social acceptability of Amazon’s facilities in France, Spain, and Portugal to understand how warehouses fit into local communities and how residents and elected officials react to logistics projects.

Presentation of the first part of the EcoCyclo study

Launched by La Fabrique de la Logistique in partnership with CRET-LOG (Aix-Marseille University) and the association Les Boîtes à Vélo, the EcoCyclo project has developed a classification of the various business models in bicycle logistics and provides a guide to assessment and best practices. See [this work](#) here.



EcoCyclo Study, January 2026

International Transport and Logistics Expo, Villepinte, France

March 31–April 2, 2026

Philippe Bairras and **Mathis Leroy** will be attending the trade show for the first time and will take the opportunity to conduct a number of interviews. Laetitia Dablanc will serve on the jury for the Innovation Awards and the Start-up Contest.

• Academic publications and presentations: Fall–Winter 2025–2026

Adoue, F., Dablanc, L., Berthon, J. (2025) *Action publique et logistique urbaine*. Livret 4 de la chaire Logistics City. https://www.lvmt.fr/wp-content/uploads/2025/11/WTLC_Livret-4_Web.pdf

Amaral, J., Holguín-Veras, J., Roorda, M., Reda, A.K., et al. (2026) Freight trip generation in metropolitan areas: An international perspective. *Transportation Research Part A: Policy and Practice*, 204, 104847. <https://doi.org/10.1016/j.tra.2025.104847>

Buldeo Rai, H., Kin, B., Buijs, P., Dablanc, L. (2026) Editorial to Special Issue on urban logistics facilities: sustainability impacts, real estate, and urban planning. *Transportation Planning and Technology*. <https://doi.org/10.1080/03081060.2025.2606513>

Dablanc, L. (2026) Améliorer les données sur la logistique urbaine à destination des collectivités territoriales. *Annales des mines : Enjeux numériques*, 33. <https://annales-des-mines.org/wp-content/uploads/2026/02/EN-202603-10.-Ameliorer-les-donnees-sur-la-logistique-urbaine-a-destination-des-collectivites-territoriales-L.-DABLANC.pdf>

Dablanc, L. (2026) *Le e-commerce et ses livraisons*. CaMBo #28 Commerce : le grand déballage. Dossier des Cahiers de la Métropole Bordelaise | a'urba. Pages 52-55. https://www.aurba.org/wp-content/uploads/2026/02/CAMBO_28_12_2025.pdf

Dugot, P., Bourbia, V., Albertelli, M. (2026) *Logistique Urbaine*. Définition dans le Dictionnaire des Transitions, éd. PUR.

Fernando, M., Nag, D., Reda, AK, Reiffer, A., Dablanc, L., Tørset, T., Mattioli, G., Heinen, E. (2026) Trends in shopping-related travel behaviour: A comparative study of four Western European countries. *European Transport Research Review* (accepted for publication April 2026).

Fisher, R., Heitz, A. (2025) Toward an urban logistics design: programming logistics in mixed-use urban projects in Île-de-France. *European Planning Studies*, 1–20. <https://www.tandfonline.com/doi/abs/10.1080/09654313.2025.2607058>

Horvath, C., Koning, M., Raton, G., Gastineau, P. (2025) Dimension spatiale de l'achat en circuit court : entre accessibilité des fermes et concurrence des circuits longs. *Économie Rurale*, 393. <https://shs.cairn.info/revue-economie-rurale-2025-3-page-5?lang=fr>

Leloup, T. (2025) Activités logistiques et problématiques foncières, quel traitement dans les schémas régionaux d'aménagement, de développement durable et d'égalité des territoires ? Master Gestion de l'environnement ENS Lyon rapport de recherche pour la Chaire Logistics City de l'Université Gustave Eiffel, Afilog et France Logistique. <https://www.lvmt.fr/wp-content/uploads/2025/10/Thomas-LELOUP-memoire.pdf>

Reda, A.K. (2025). Best practices and policies in e-commerce last-mile logistics. Présenté at Séminaire Gouverner la logistique urbaine, 4 décembre 2025, Paris.

Reda, AK, Dablanc, L. (2025) State of the Practice on E-Commerce Last Mile Logistics Solutions and Measures. Report for the ANR FRESH project. University Gustave Eiffel. https://www.lvmt.fr/wp-content/uploads/2025/11/FRESH_T1_1_E-commerce_last_mile_delivery_final.pdf

Schorung, M., Albertelli, M. (2025) Geohistorical analysis of US central rail stations: functions, representations, planning practices. Conference of the Urban History Association, 9-12 October, Los Angeles, USA.

Vernet, C., et Dablanc, L (Dir.), Krier, C., Foucher F., Louvet N., Adoue, F., Amoros, E., Fontana, L., Fort, E., Gadegbeku, B., Tandzi-Tonleu, F. (2026) Étude sur les livreurs des plateformes de livraison instantanée à Paris et à Lyon. Rapport final pour le projet ERROLI et la chaire Logistics City. <https://drive.google.com/file/d/106BICNuwwJdJUsATZZRnBSvmu675-f9E/>

Younes, M. (2026) Working inventory of warehouse footprints in Île-de-France, France (v0.1.0) [Data set]. Zenodo. <https://doi.org/10.5281/zenodo.19131942>

Presentations at French professional conferences, media

Journée **Femmes & Sciences**, 11 avril 2026, Ecole Polytechnique

Enjeux du foncier logistique et du ZAN dans les schémas régionaux. Présentation aux **Journées Afilog**, Lyon, 25 février 2026. <https://www.lvmt.fr/wp-content/uploads/2019/10/Afilog-DABLANC-SRADDET-et-logistique-V2.pdf>

World Impact Summit sur la cyclologistique et programme Cyclo-cardiologie le 5 février 2026 à Paris.

<https://cyclocargologie.fr/bibliotheque-media/replay-table-ronde-intermodalite-des-solutions-concretes-pour-transformer-la-logistique-urbaine/>

Agence d'urbanisme de Bordeaux a'urba, 3 février 2026, présentations et débat autour du dernier numéro de CaMBo #28 : Commerce, le grand déballage.

Enquêtes sur les livreurs de plateformes. Présentation pour **Mobil'inPulse**, 5 février 2026.

<https://www.lvmt.fr/wp-content/uploads/2019/10/MOBIL-IMPULSE-5-Feb-2026.pdf>

TDIE 28 janvier 2026 journée Transports du quotidien, mobilité et logistique : de nouveaux enjeux ? Replay

<https://tdie.eu/replay-transports-du-quotidien-mobilite-et-logistique-de-nouveaux-enjeux/> et présentation :

<https://www.lvmt.fr/wp-content/uploads/2019/10/TDIE-28-janvier-2026-Dablanc.pdf>

France Logistique, 4ème journée de la filière, 12 novembre 2025.

3è **Assises Européennes du Centre-Ville**, 6 novembre 2025.

Ville de Paris, comité des partenaires de la stratégie logistique, 14 octobre 2025.

Conférence « Livraison urbaine : poumon économique de la ville et des territoires », organisée par la **Société d'Encouragement pour l'Industrie Nationale**, 23 septembre 2025

Logistique urbaine du e-commerce : résultats de recherches. **Club Demeter**, 9 septembre 2025.

Territoriale Herausforderungen für ein effizientes Logistiknetzwerk. Présentation au **Berner Verkehrstag 2025**

Thema: Güterverkehr im Wandel: Herausforderungen, Chancen und Verantwortung der Politik, 22 août 2025.

<https://www.lvmt.fr/wp-content/uploads/2019/10/Berner-Verkehrstag-2025.pdf>

Media

Ville, Rail, Transports, mars 2026

Tribune de Lyon, 25 février 2026

Alternatives Économiques, 3 décembre 2025

Les Échos, 18 novembre 2025

Le nouvel Economiste, 6 septembre 2025

Réflexions immobilières, IEIF, n°109 juillet 2025

• The Chair's team in April 2026

Postdoctoral researchers

In March 2026, **Philippe Bairras** joined the research team as a postdoctoral researcher for a one-year term. After defending his PhD thesis in geography (specializing in transportation) in October 2025 at Gustave Eiffel University and the New University of Lisbon, Philippe is conducting mixed-methods research on the political and social acceptability of Amazon's facilities in France, Spain, and Portugal. The study analyzes the regional integration of the warehouses, the reactions of local residents and elected officials, as well as Amazon's strategies in response to local resistance.

Since April 2024, **Abel Kebede Reda** has joined the research team as a postdoctoral researcher for a three-year term. Abel is working on the European ANR/DUT FRESH project (The FREight-SHopping nexus in urban outskirts and beyond). He earned his PhD in transport systems and logistics at the Swedish University of Agricultural Sciences (SLU) in Uppsala, Sweden, in 2023, where his research focused on characterizing and modeling urban freight to inform planning policies and assess their impacts in major cities. Abel is now working on commerce and e-commerce in the context of the 15-minute city.

Associate senior researcher

François Adoue holds a Ph.D. in Urban Planning and Spatial Planning (University Paris-Est) and works as a consultant and independent researcher. His research focuses on the growing role of digital technology in the mobility of both people and goods, its impact on changing travel habits, and the emergence of innovative solutions

Doctoral students

Pierre-Henri Besnard (École des Ponts) is researching the “Politicization of Urban Logistics Issues” under the supervision of Laetitia Dablanc (LVMT) and Gilles Jeannot (LATTS). Labor law and the rise of gig delivery platforms, environmental law, urban planning law, and political and sociological issues surrounding the paradoxes of proximity — urban logistics is raising a growing number of new public policy questions. Drawing on a methodology borrowed from political science, this research aims to analyze contemporary public issues in urban logistics through two case studies: the government’s handling of ‘dark stores’ between 2020 and 2023, and the management of pollution through the gradual implementation of tools such as low-emission zones (LEZs).

Reece Fisher (University Gustave Eiffel, Sogaris) is working on “The Urban Production of Logistics: Analysis of the Impacts of Integrating Logistics into Mixed-Use Urban Projects,” under the supervision of Laetitia Dablanc and Adeline Heitz (CNAM) and supervised by Juliette Berthon at Sogaris. The evolution of logistics activities for e-commerce and last-mile deliveries has enabled the development of innovations in cities and in the urban logistics sector. The main objective of this research is to develop a methodology for assessing the impact of integrating logistics into urban projects through a combination of ex-ante and ex-post analyses.

Mohammed Younes formerly a research assistant at the Logistics City Chair, began a doctoral thesis in December 2025 under the supervision of Daphné Tuncer and Laetitia Dablanc. Conducted as part of the ACME (Approvisionnement Collaboratif Multimodal Écologique) project of the PEPR MOBIDEC at the École des Ponts, his thesis project focuses on data management for multi-stakeholder and cross-domain knowledge sharing in the supply chain.

Current research internships

Mathis Leroy, an urban engineering student (Technical University of Compiègne), is completing his final-year internship at the Chair from February to July 2026 (6-month internship). His internship topic is the socio-spatial analysis of factors influencing the location of logistics warehouses.

Amel Rahim, a student in data science and artificial intelligence at the National Polytechnic School of Algiers, is interning at the Chair from April to September 2026 (6-month internship) focused on the automatic detection of warehouses. Co-supervised by Mohammed Younes (LVMT) and Adrien Béziat (SPLOTT), this work will aim to develop deep learning methods applied to the identification of logistics buildings using aerial imagery and geographic data.

Camille Roches Demars, will join the Chair as an intern in June 2026 (3-month internship) to work on parcel crowd delivery in partnership with the National van freight transport union (SNTL) and the Professional Federation of Cycle Logistics.

Chair director

Laetitia Dablanc, a PhD graduate of École des Ponts and a graduate of Cornell University and Sciences Po, is a Professor at Gustave Eiffel University. She is a member of the Steering Committee of the World Conference on Transport Research Society. Her research areas include freight transport, freight and the environment, urban freight and logistics, public policy, and spatial issues related to urban logistics.

Former postdoctoral researchers

Marion Albertelli Researcher, AME-SPLOTT Laboratory, Gustave Eiffel University

Heleen Buldeo Rai Logistics Professor, Vrije Universiteit Brussel, Belgium

Adeline Heitz Associate Professor of Urban Planning, Transportation, and Logistics, Lirsa, CNAM Paris

Camille Horvath Lecturer and Researcher in Economics, École supérieure des agricultures

Matthieu Schorung Associate Professor of Geography, Médiations Laboratory, Sorbonne University

Contacts

François Adoue adoue.francois@gmail.com

Philippe Bairras philippe.bairras@enpc.fr

Pierre-Henri Besnard pierre-henri.besnard@enpc.fr

Laetitia Dablanc laetitia.dablanc@univ-eiffel.fr

Reece Fisher reece.fisher@enpc.fr

Abel Kebede Reda abel.kebede-reda@enpc.fr

Mohammed Younes mohammed.younes@enpc.fr